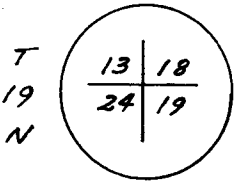


CERTIFIED LAND CORNER RECORDATION

R 70 W | R 69 W

DESCRIPTION OF CORNER EVIDENCE FOUND, AND ORIGINAL RECORD (If known)

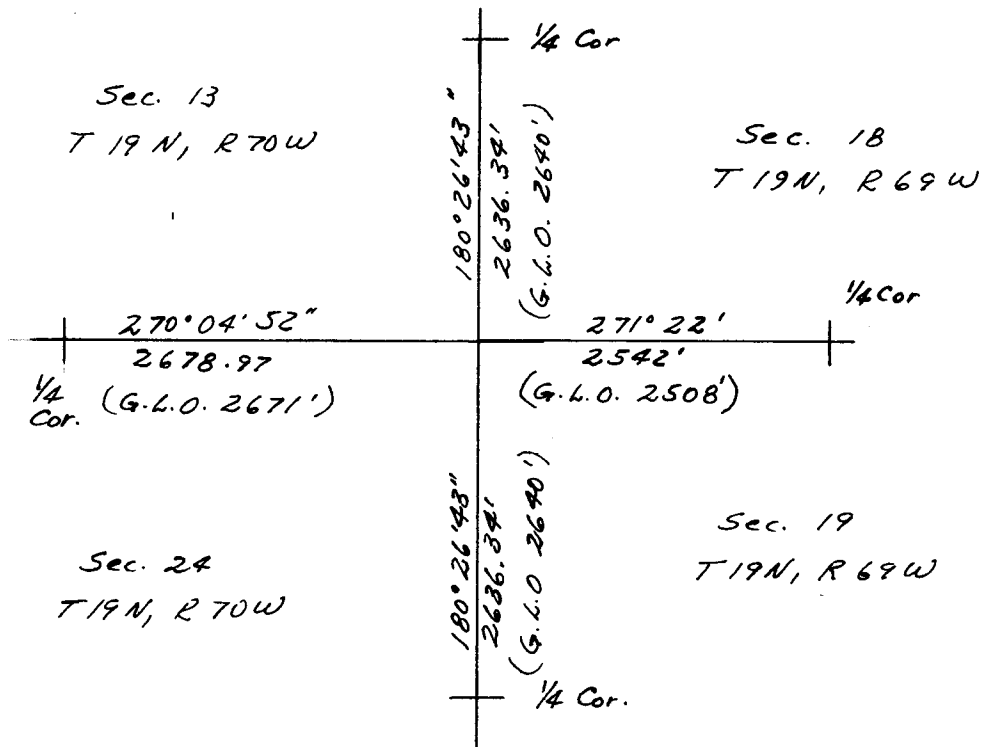


No evidence of the original monument was found which is described as a granite boulder 20" x 12" x 8"

DESCRIPTION OF MONUMENT AND ACCESSORIES ESTABLISHED TO PERPETUATE THE ORIGINAL LOCATION OF THIS CORNER:

Using single proportional measurements relocated lost corner. Set a 1 1/2" Iron Pipe with Aluminium Cap as reestablished corner monument. Location 3'± South of old fence line (east-west).

SKETCH, WITH COURSE AND DISTANCE TO ADJACENT CORNER IF DETERMINED IN THIS SURVEY. (May Sketch or Paste Reproduction on Reverse Side.)



I, Edward C. Fry certify that I have carefully performed ~~examined~~ the work done on the diagrammed corner as reported on this recordation form and approve the same.

Edward C. Fry P.E./L.S. 662
Signature of Surveyor Registration No.

STATE OF WYOMING,

Office of Clerk and Recorder

County of Laramie

594256

This "corner record" was filed for record on the OCT 2 1980 day of 19, was noted on the cross-index plat and is assigned page No. in book No.

James C. Whithead County Official

Cross Index No.	T. N 25	T. 19	R. 70	Mer.
Photographed	_____	_____	_____	Mer.
Indexed	_____	_____	_____	Mer.
Posted	_____	_____	_____	Mer.
Assessor	_____	_____	_____	Mer.